

## Specifications

- Heavy-duty 16 gauge frame construction holds 1800 pounds
- Silvervein Powdercoat 1" thick steel seat frame offers durability and protects against scratches and marring. Back frame is 3/4" steel.
- Top-grade seat and back construction - all plywood inside
- T-nut construction for added strength in securing foundation to frame
- Commercial grade rolled front seat cushion
- Built-in ganging device for interlocking chairs together
- Lumbar support for comfort
- Stain Resistant fabrics
- Meets Cal-117 specifications
- 20"W, 35"H, 20 lbs.
- **Not available in parts of MA, FL, or NY**

## Warranty

- 20 year, 100% full-replacement frame/structural warranty with a five year, 100% full replacement on all other components

## OPTIONS:

- Underseat Book Basket with communion cup holder - \$3.50 each
- Chair Dolly - \$99.00
- Kneelers - \$30.00

**\*Call for Delivery 800-935-7397.**

Allow 2-4 weeks for delivery.

Rush service available.

# JOURNEY II CHURCH CHAIRS



**MADE IN THE U.S.A.**

<u>QUANTITY</u>	<u>PRICING</u>
<b>50-99</b>	<b>\$38.99</b>
<b>100-199</b>	<b>\$37.99</b>
<b>200-399</b>	<b>\$36.99</b>
<b>400+</b>	<b>\$35.99</b>

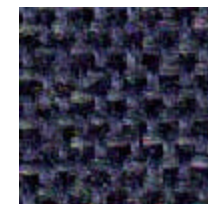
CHURCH CHAIRS FOR LESS !

Please Call Today:

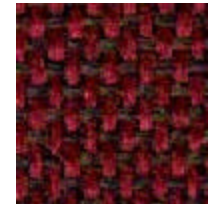
1-800-935-7397 or 540-493-7900

9 AM – 5:30 PM ET Monday - Friday

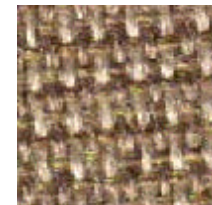
[ChurchFurnitureStore.com](http://ChurchFurnitureStore.com)



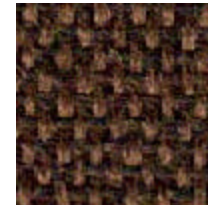
NAVY BLUE



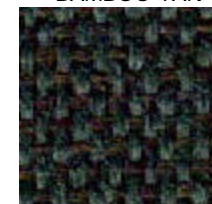
RUBY RED



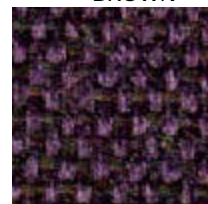
BAMBOO TAN



BROWN



SAGE GREEN



VIOLET